



**SEDGWICK TOWN OFFICE**

719 NORTH SEDGWICK ROAD, SEDGWICK, ME 04876 — EXISTING AERIAL PHOTOGRAPH

26 February, 2009

PCNS 11-4019

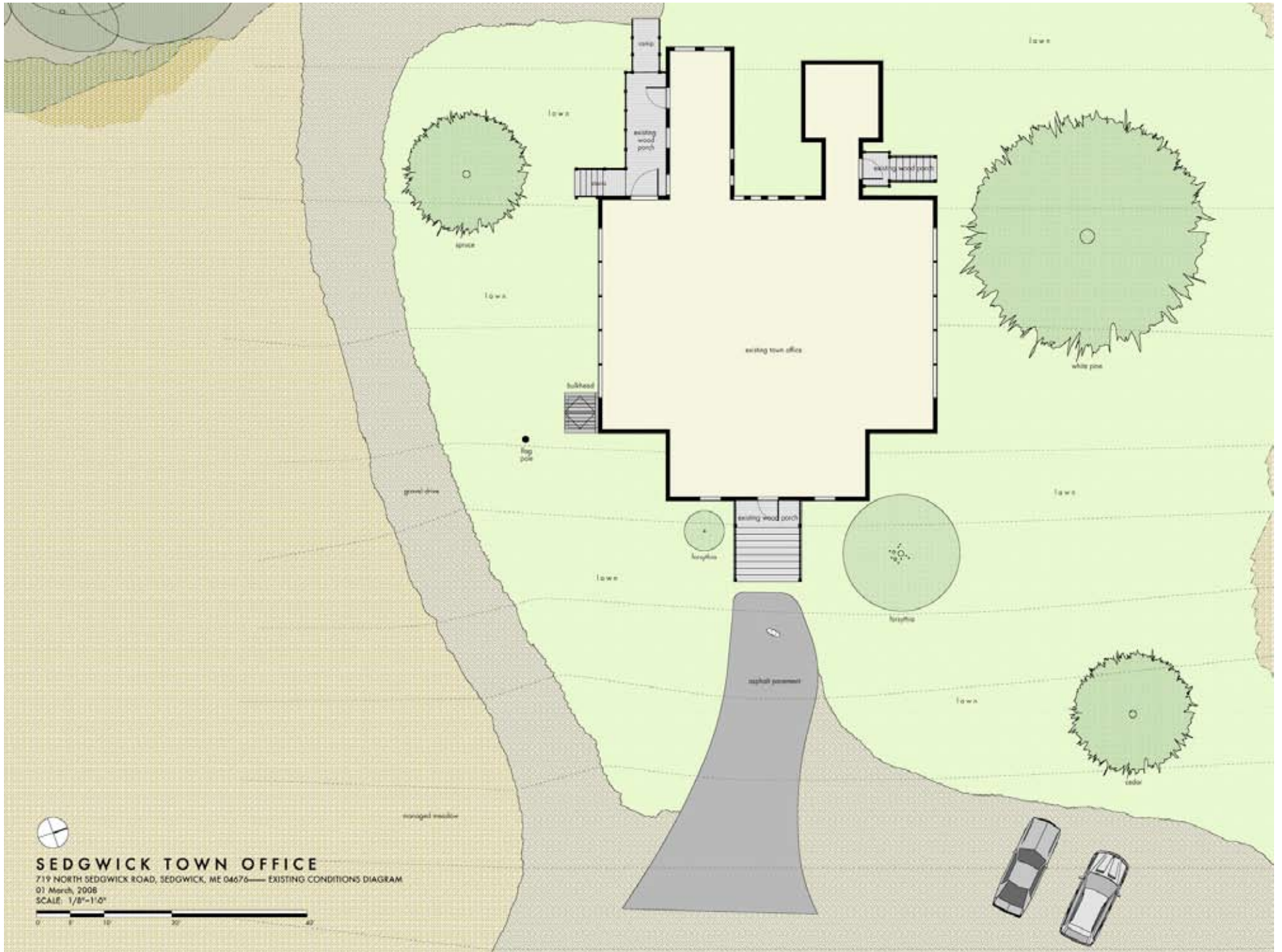




**SEDGWICK TOWN OFFICE**  
 719 NORTH SEDGWICK ROAD, SEDGWICK, ME 04878 — EXISTING CONDITIONS DIAGRAM  
 26 February, 2008  
 SCALE: 1"=40' 0"







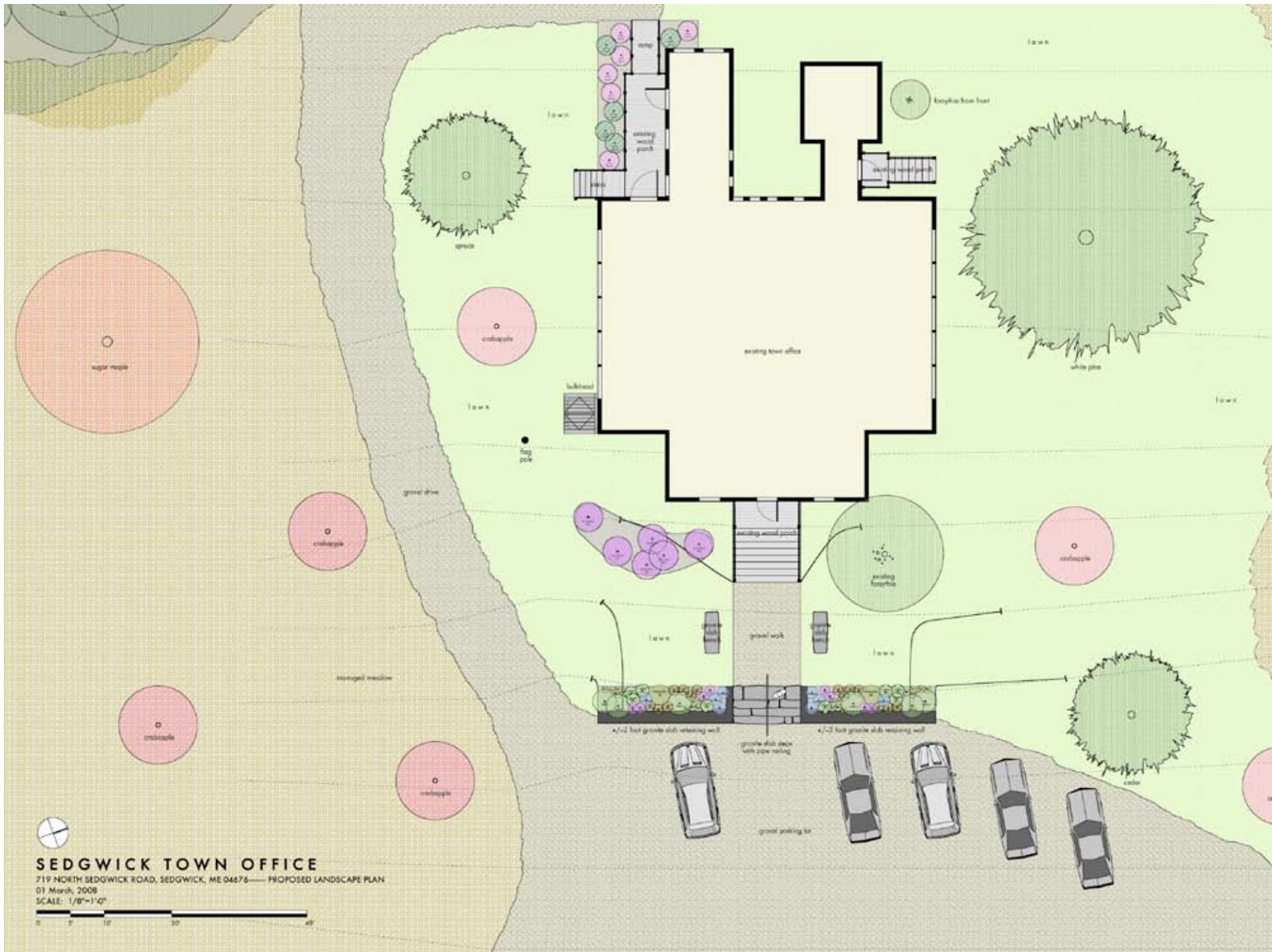
**SEDGWICK TOWN OFFICE**

719 NORTH SEDGWICK ROAD, SEDGWICK, ME 04676 — EXISTING CONDITIONS DIAGRAM

01 March, 2008

SCALE: 1/8"=1'-0"





**SEDGWICK TOWN OFFICE**

719 NORTH SEDGWICK ROAD, SEDGWICK, ME 04678 — PROPOSED LANDSCAPE PLAN  
 01 March, 2008

SCALE: 1/8"=1'-0"





At the Sedgwick Town Office, local building materials and a plant palette composed predominantly of native species merge to create a welcoming and authentic sense of arrival to the antique school house.

Stairs and a low retaining wall constructed from slabs of granite establish a sensible transition from the parking lot to the building's main entrance. On either side of the crushed stone walkway are granite memorial benches, both sitting in a new lawn area.

Hardy and low-maintenance plants such as Clethra, Fothergilla, Sweet Fern, Lowbush Blueberry, Hayscented Fern, Aster, and Amsonia, are planted loosely at the top of the wall and encouraged to spill over the edge. A drift of old-fashioned Lilacs are positioned to the left of the front stairs to balance the magnificent Forsythia bush, and a mass of pink and white Rugosa roses are planted at the handicap accessible ramp behind the building. A "memorial orchard" of a disease-resistant species of white Crabapple gives an opportunity to tribute locals, and provides interest throughout all four seasons.

The existing character of the site is maintained and celebrated as various phases of the project are completed.

